



## USER & INSTALLATION INSTRUCTIONS

### **BANO CLEAN 700 SERIES BC-711 & BC-712**



## Bano Clean 700 series

Experience the perfect combination of hygiene, comfort, and independence with the Bano Clean 700 series — a bidet toilet seat designed to empower users through innovative technology and thoughtful design. Engineered for those who value self-reliance, this advanced solution ensures that managing intimate hygiene is easy, efficient, and comfortable for everyone.

### Designed for All Users

The Bano Clean 700 series is specifically developed for users who need a bidet attachment with washing and drying functions. Ideal for individuals with reduced arm or leg mobility or those who require enhanced sitting stability, this bidet toilet seat is intuitive and simple to operate.

### Universal Compatibility and Flexible Installation

- Specially designed to fit a wide range of toilets commonly found in the Norwegian market, both wall-mounted and floor-standing models.
- Comes with a variety of accessories, allowing seamless installation on both large and small toilets



### Tailored for Comfort and Stability

The Bano Clean 700 series offers two seat sizes to suit different user needs:

- BC711: Smaller version, perfect for children and individuals with smaller body frames.
- BC712: Larger version, offering optimal seating comfort and stability for adult men and women.

Both seats support users up to a maximum weight of 150 kg. Crafted from hygienic plastic, the seat ensures easy maintenance and cleaning, especially for those with reduced mobility.

## Enhanced Comfort with Heated Seating

For added luxury and reassurance, the toilet seat features built-in heating — crucial for comfort and providing a sense of security for users with limited sitting stability.

## Intelligent Washing Programs

The Bano Clean 700 series features both manual and automatic washing programs:

### Manual Programs

- Rear wash
- Front wash
- Drying function

### Automatic Washing Programs

- Pre-configured from the factory to suit most users.
- Fully customizable settings that can be saved under Auto Program 1 or Auto Program 2, giving users complete control over their washing experience.

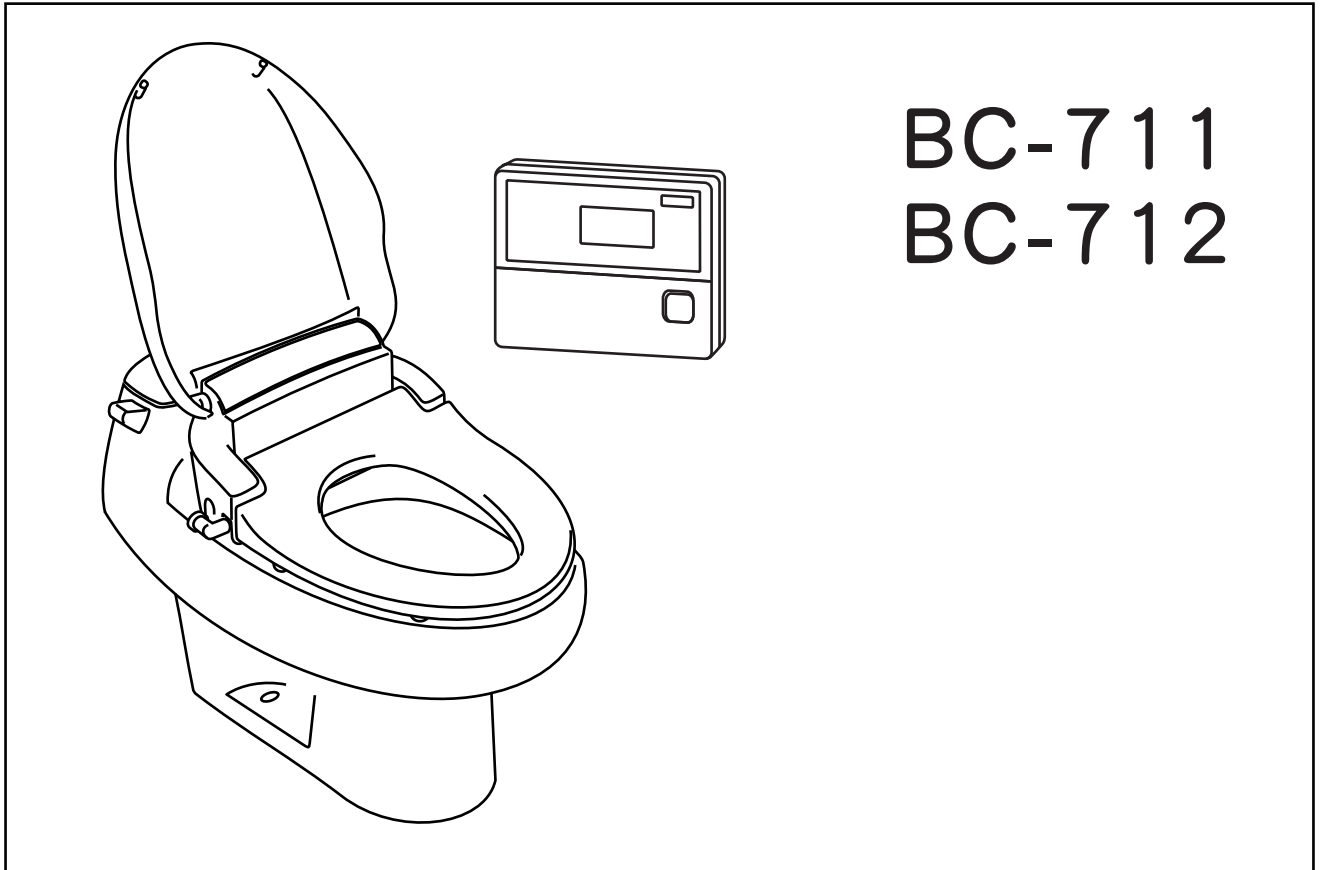
Manual and automatic programs operate based on preset parameters, but the user can also adjust:

- Water volume and temperature
- Nozzle position and pulsation
- Oscillating nozzle feature
- Dryer volume and temperature
- Time intervals

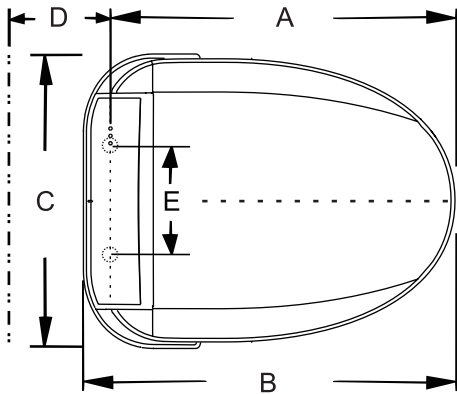


## Built for Safety and Versatility

Safety is a top priority. The Bano Clean 700 series include an IPx5 water resistance rating, ensuring it is safe for placement in the shower zone. It can even double as a shower chair when needed, offering maximum functionality in a single product.



**BC-711**  
**BC-712**



Bidet seat	BC-711	BC-712
A	430mm	460mm
B	470mm	500mm
C	400mm	
D	30mm	
E	140~170mm	

● **Safety Devices**

1. warm water overheat protection safety device.
2. warm water overheat sensor.
3. warm water overheat power cutoff system .
4. heated seat overheat power cutoff system .
5. waterless detection system.
6. seat occupancy sensor switch.

BD1206v

Read the following manual before use

# Precautions before installation

- Please confirm the attached parts and install the computer toilet seat according to the size of the toilet.

Mounting consul with complete mounting set		Remote control	
Wall mount plate		Electronic bidet seat	
T-connector			
Expansion screw set (A)		Flexible connecting water hose	
Expansion screw set (B)			

- ⊙ Depending on the machine type, it can be equipped with the expansion screw set of type (A) or (B).
- ⊙ Before the installation work is completed, please do not connect electricity or water to the product, as this may cause malfunction.
- ⊙ The connection port of the main body is made of plastic material.
- ⊙ When installing piping, please avoid improper torque locking to avoid causing malfunction. In order to fully utilize the functions of the product, please follow the instructions in this installation project and install it correctly.

## ⚠ NOTICE :

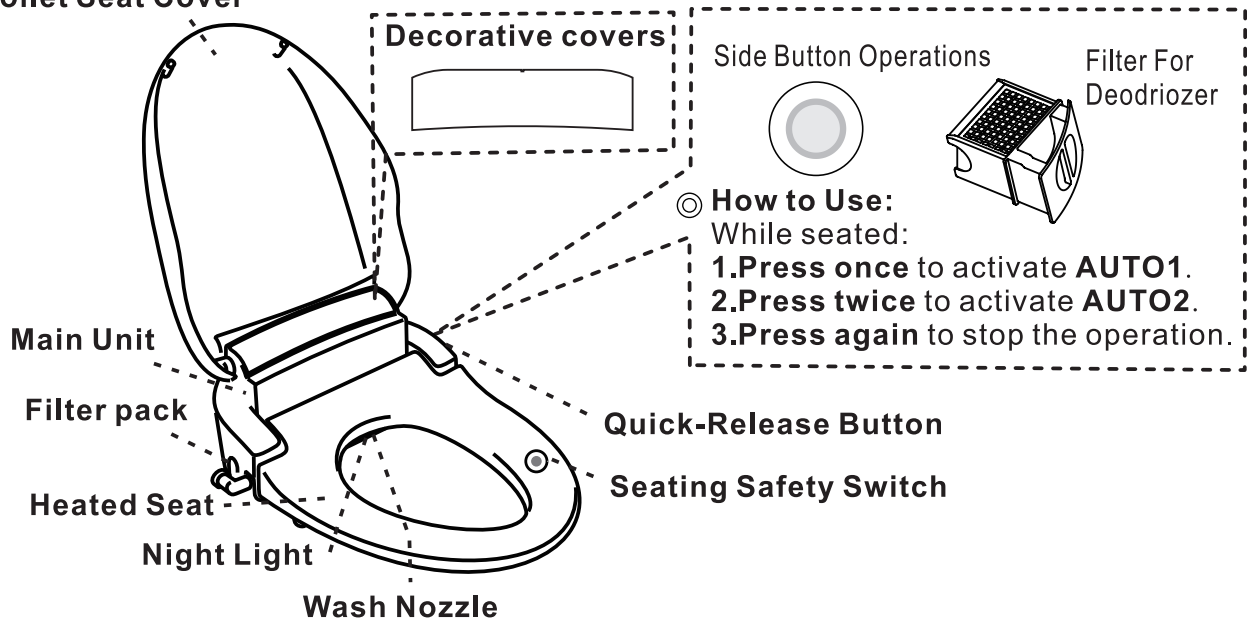
### ⊙ **Compatibility with Toilets:**

This product is designed for toilets with a 1/2-inch pipe thread (P/F 1/2). If your toilet also uses a 1/2-inch pipe thread but requires a modified connection setup, please hire a qualified professional installer from a reputable service provider to avoid potential water leakage.

### ⊙ **Use with Anti-Siphon Valves:**

When using this product, ensure it is paired with an inlet valve equipped with an anti-siphon mechanism. This is essential for maintaining proper functionality and preventing backflow contamination of the water supply through siphoning.

### Toilet Seat Cover



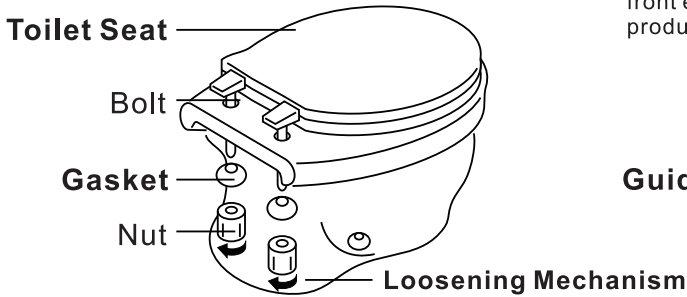
# Safety Precautions

- Do not handle the plug with wet hands. This can result in electric shock.
- Ensure the plug is securely inserted. A loosely connected plug may cause short circuits, overheating, fires, or electric shock.
- Do not use damaged power cords or modified extension cords. Avoid placing heavy objects on power cords or modifying them, as this can lead to damage or malfunction.
- Avoid using intermediary connections or extension cords. These may overheat and result in fire or electric shock.
- Do not damage the power cord or plug.
  - Avoid exposing the power cord to damage, modification, high temperatures, excessive bending, pulling, or compression under heavy objects. Do not tie it in knots.
  - Using a damaged power cord or plug may result in electric shock, short circuits, or fire. Contact your distributor for repairs.
- Keep the product away from areas prone to water splashes or high humidity. When using the product in a bathroom, ensure proper ventilation by installing an exhaust fan or ventilation port to maintain air circulation, preventing fire or electric shock.
- If an abnormality occurs (e.g., a burning smell), stop using the product immediately and unplug it.
  - Continuing to operate the product in an abnormal state may cause overheating, fire, or electric shock. Contact your distributor or authorized service center promptly.
- Follow the power outlet installation guidelines:
  - Use a high-sensitivity, quick-acting residual current circuit breaker (rated sensitivity of 15 mA or less) or an isolation transformer (1.5 kVA–3 kVA) to protect the power circuit.
  - The power outlet should be installed at least 0.8 meters above the ground and away from water sources.
  - If the outlet does not meet these specifications, consult your distributor or service personnel.
- Unplug the product during thunderstorms. This helps prevent product malfunction or damage.
- Ensure proper grounding of the product.
  - Lack of grounding may result in electric shock during malfunctions or leakage.
  - Note: Proper grounding requires a resistance below 100Ω, and the distribution board grounding wire should be copper with a diameter of 1.6 mm or more.
  - If grounding is not set up, contact your distributor or service personnel.
- Do not use underground water or industrial water. These may cause skin irritation or other adverse reactions.
- Avoid applying pressure, excessive bending, or twisting to the water supply hose. This helps prevent water leakage.
- Do not lean on the seat cover. This may cause it to break or tip over.

**Do not splash excess water on the device outside of its operational parameters, or if the device is damaged in any way**
- "If the supply cord is damaged, it must be replaced by the manufacturer, its service agent or similarly qualified persons in order to avoid a hazard."
- This appliance can be used by children aged from 3 years and above and persons with reduced physical, sensory or mental capabilities or lack of experience and knowledge if they have been given supervision or instruction concerning use of the appliance in a safe way and understand the hazards involved.
- Children shall not play with the appliance.

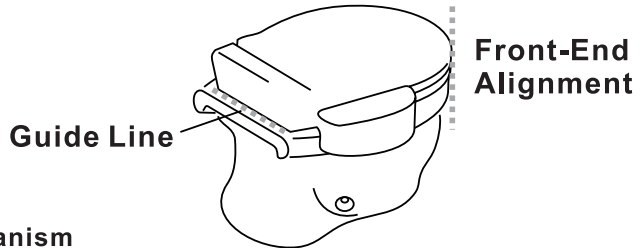
# Installation engineering instructions

## 1 Remove the Existing Toilet Seat



## 2 Confirm Installation Position

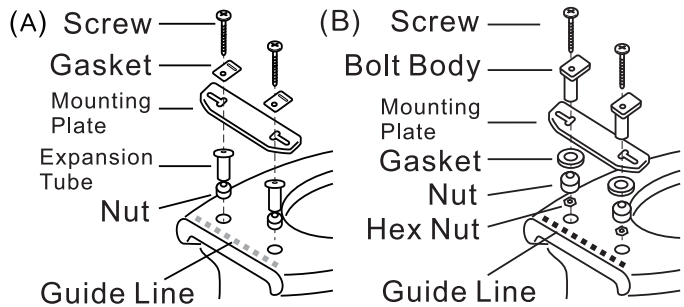
Place the product temporarily on the toilet to check the alignment. Ensure the front edge of the product aligns with the front edge of the toilet. Mark a guide line at the rear edge of the product for positioning.



## 3 Install the Mounting Plate

Align the rear end of the mounting plate with the guide line, then secure it using the screw assembly.

- Refer to the illustration on the right for details.
- Insert screws until the expansion tube and nut contact the mounting plate, then secure it in the toilet's mounting holes.

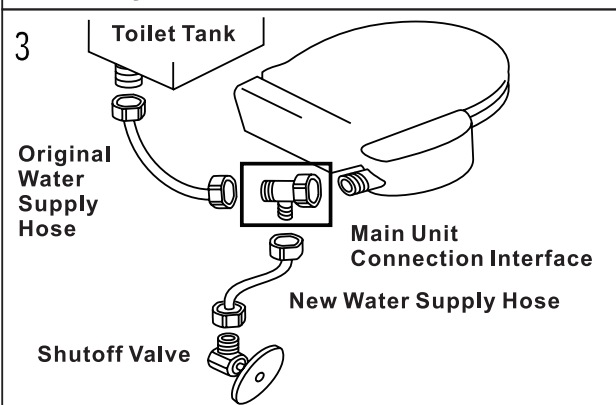
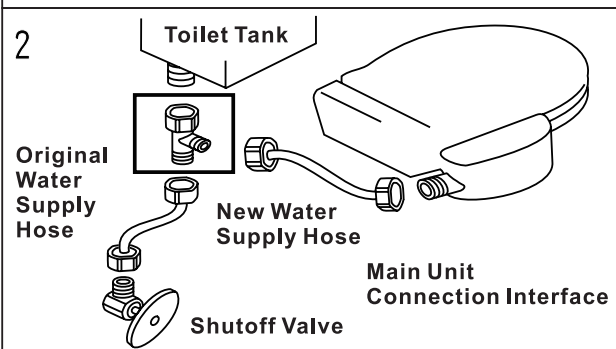
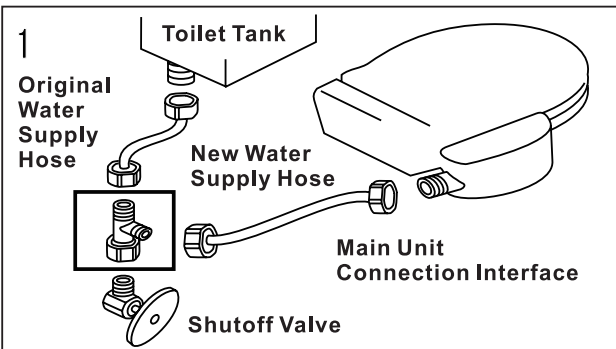


## 4 Connect the Diverter Valve

Choose from three installation options for connecting the diverter valve.

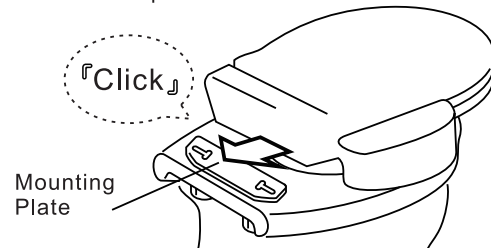


**Note:** Always use the new water supply hose provided when connecting to the main unit.

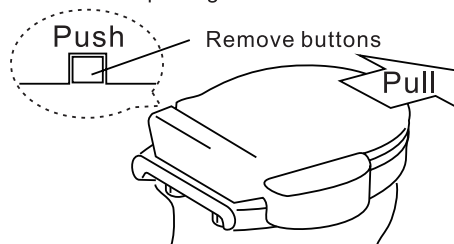


## 5 Attach the Main Unit to the Mounting Plate

Push the main unit in the direction of the arrow until you hear a "click," indicating it is securely locked in place.



- ⊙ To detach the main unit, press the quick-release button while pulling the main unit forward.



## 6 Test the Installation

- ⊙ Plug the power cord into an outlet that matches the rated voltage.
- ⊙ After installation, follow the proper usage instructions in the manual.
- ⊙ Do not plug in the power cord until installation is complete.

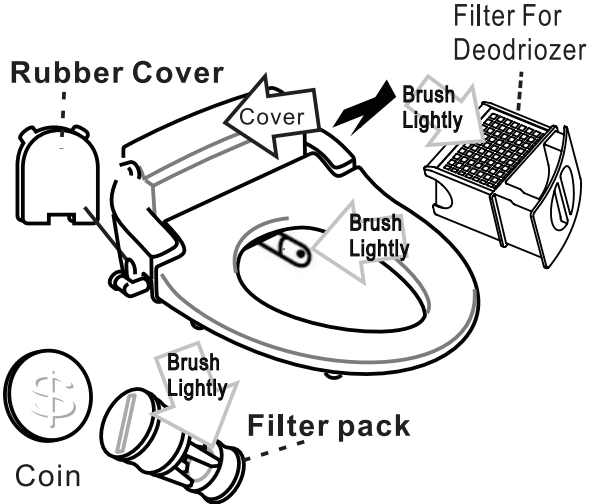


### Warnings

- The main unit connection interface is made of plastic. Avoid applying excessive torque when securing the pipes to prevent damage.
- Do not use adhesive to secure any parts.
- Keep cigarettes or other spark-producing materials away from the product.

# Filter Pack Cleaning

1. **Turn Off the Water Shutoff Valve:**
  - Ensure the shutoff valve for the water supply is completely closed before starting.
2. **Remove the Decorative Rubber Cover:**
  - Detach the rubber cover located on the side of the main unit.
3. **Remove the Filter Pack:**
  - Use a coin or appropriate tool to unscrew and remove the filter pack.
4. **Clean the Filter:**
  - Gently brush the surface of the filter with a soft brush.

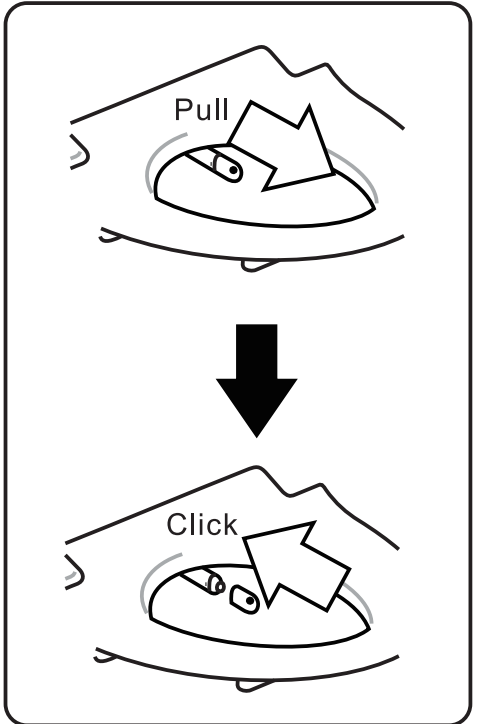
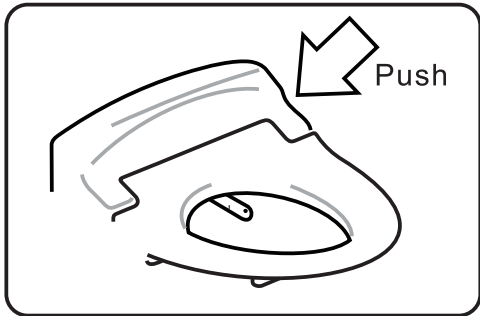


- **Important Notes:**  
After cleaning, ensure the filter pack is securely reinstalled and tightened in the unit. Do not wash the activated carbon component with water.

# Nozzle Tip Cleaning And Replacement

⦿ **Nozzle Cleaning:**

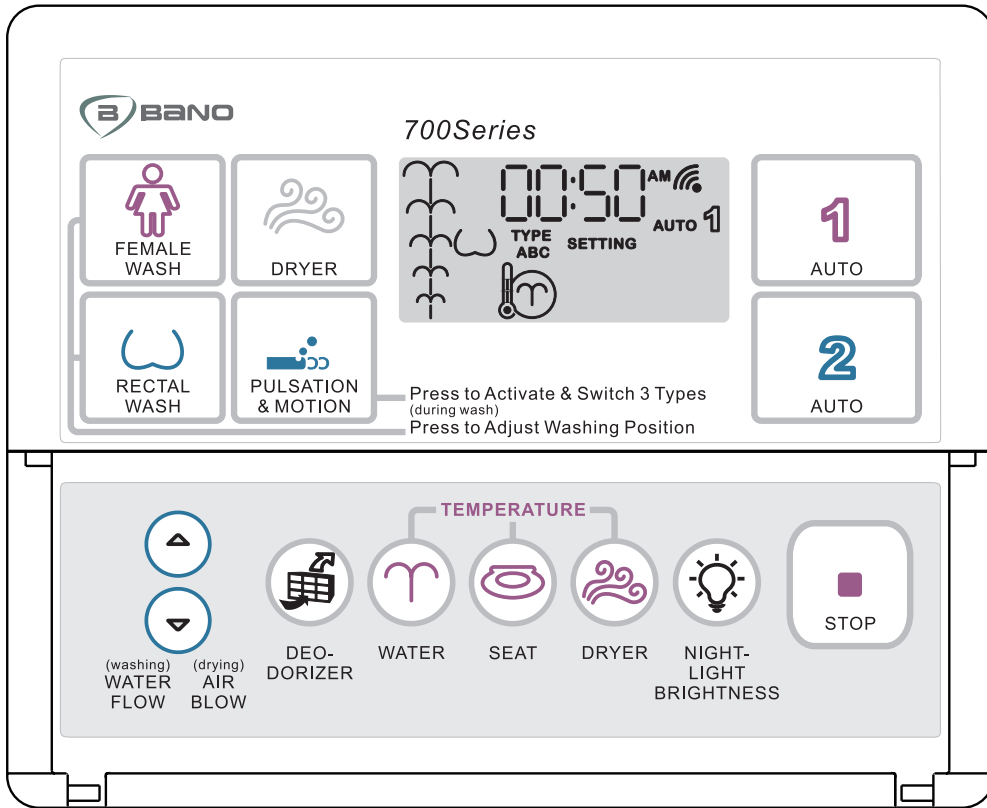
1. **Automatic Cleaning:**
  - While not seated, press the side button once to activate the automatic nozzle cleaning function for 10 seconds. This can also help clean the water tank with repeated use.
2. **Manual Cleaning:**
  - Press the side button twice in quick succession to extend the nozzle automatically. It will stop for 2 minutes. During this time, you can hold the extended nozzle assembly to manually clean the nozzle or replace it with a new nozzle tip.



**⚠ Important:**

- ⦿ **Replacing the Nozzle Tip:**
1. Align the new nozzle tip with the nozzle pipe and push it upwards until it clicks into place.
  2. Unplug the power cord and plug it back in to reset the system.  
Due to the structural design, the nozzle pipe cannot be completely pulled out.
  3. Avoid applying excessive force to prevent damage.

# Remote Control Settings



The remote control can connect to external devices to manage the AUTO1 function.

## Important:

To pair the remote control with the bidet, press any button on the remote within 10 seconds after powering on the unit.

### ⦿ Remote Control Time Settings



1. Press and hold the **Stop** button for 5 seconds to enter the time adjustment screen.
2. Use the **Water Volume Up** button to adjust the hour and the **Water Volume Down** button to adjust the minutes.
3. Press the **Stop** button again or wait for 10 seconds without pressing any button to save the settings and return to the standby screen.

### ⦿ Sound Settings



1. Press the **Night Light** button to toggle the sound on or off.
2. The screen will display "A" to indicate that the sound is on.
3. The screen will display "B" to indicate that the sound is off.

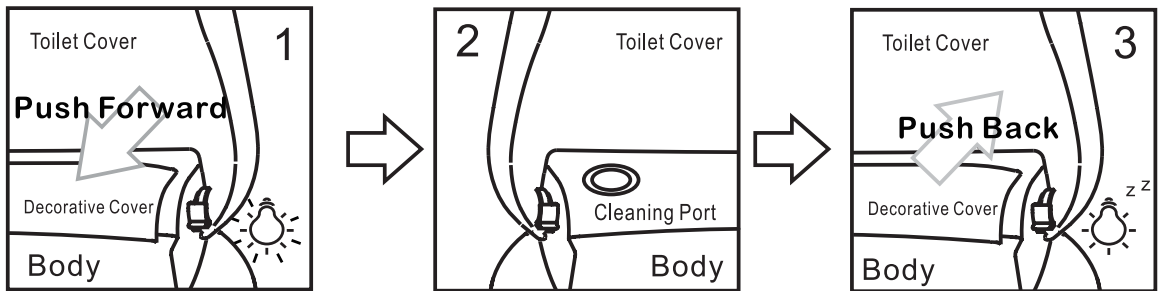
### ⦿ Seated Wash Nozzle Settings



1. Press the **Water Temperature** button to toggle the seated wash nozzle on or off.
2. The screen will display "C" to indicate that the seated wash nozzle is on.

# Toilet Lid/Seat/Water Path Cleaning

## ⊙ Bidet Water Path Cleaning System



1. Slide the **decorative cover** forward to remove it. (The night light will flash.)
2. Pour the cleaning agent into the **cleaning port**. (Cleaning liquid flowing out from the drainage port indicates successful filling.)
3. Push the **decorative cover** back into place to start the automatic cleaning process. (The night light will display a breathing light effect.)
4. The cleaning process takes approximately **32 minutes**.
5. If someone sits down during the cleaning process, it will **force-drain for 12 minutes** and return to user mode.
6. If the bidet has not been cleaned for **four months**, the blue light will flash twice and then stay on briefly. (This does not affect the bidet's functionality.)

### ⊙ Important:

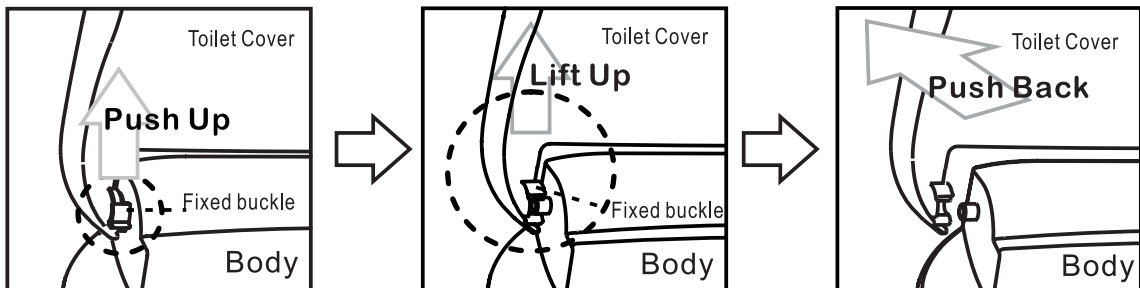
1. Regular cleaning is recommended **once a month** to maintain optimal performance.
2. If the **decorative cover** is not reattached, all bidet functions will be disabled.



### Warning:

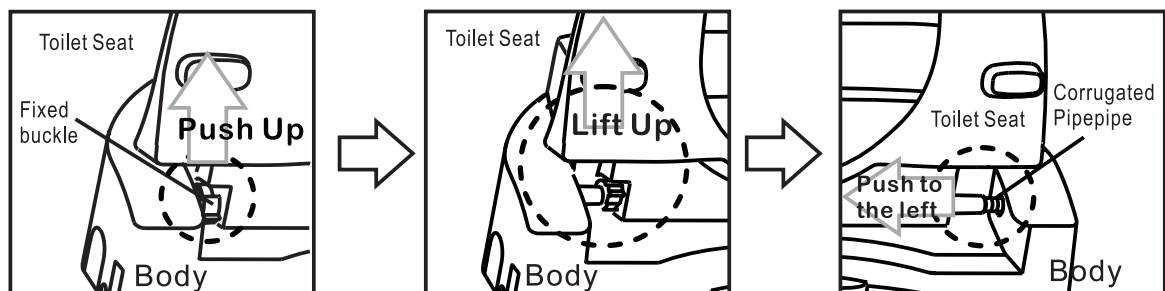
- Only use **food-grade liquid citric acid descaling agents** to remove limescale buildup.

## ⊙ Toilet Lid Cleaning



1. Lift the toilet lid, then push the left **fastener** upward.
2. Lift the **left side** of the lid upward.
3. Slide the lid backward and remove it from the **right side** for cleaning.

## ⊙ Toilet Seat Cleaning



1. Lift the toilet seat, then push the left **fastener** upward.
2. Lift the **left side** of the seat upward.
3. Pull the seat slightly to the **left** to partially detach it from the unit for cleaning.



### Warning:

- The **right side of the seat** is connected to the unit by a **fixed corrugated pipe** that secures electrical wires.
- Do not forcibly pull out the corrugated pipe. Doing so may damage the wires, leading to malfunctions.

# Specifications IPX5

Model no.		BC-711	BC-712
Power supply		AC220v, 50/60Hz.	
Water supply pressure		Max. 10 bar	
Heated seat		Adjustable in 4 steps:Room temp/34°C /36°C /38°C.	
Bidet seat and lid		Slow-close seat and lid	
Warm water wash	Water flow	approx. 0.8 L/min.	
	Water temperature	Adjustable in 4 steps:Room temp/35°C /37.5°C /40°C.	
Safety Devices		Rated operating current 15mA.	
		1. warm water overheat protection safety device. 2. warm water overheat sensor. 3. warm water overheat power cutoff system . 4. heated seat overheat power cutoff system . 5. waterless detection system. 6. seat occupancy sensor switch.	
Power wire length		1.5m	
The toilet seat measures		17cmx42.6cmx47cm	17cmx42.6cmx50cm
Item Weight		6.4kg	
Warm air dryer	Dryer temperature	Adjustable in 3 steps:Between 40°C and 70°C.	
	Power consumption	Between 370W and 435W.	
Max. user weight		125 kg/JHC-711 150 kg/JHC-712	

**Note:**

Outlets and voltage differ internationally and this product may require an adapter or converter for use in your destination.

Please check compatibility before purchasing.

**Correct Usage Instructions**

1. Please press the buttons for front wash and back wash after sitting on the toilet seat.
2. When you are not sitting on the seat touch sensor switch, pressing the wash button will not perform the action.
3. The flushing temperature and toilet seat temperature can be adjusted in 4 stages according to personal preference.
4. The stop button is used to stop washing.
5. When there is no heating, the microcomputer circuit still consumes a small amount of power. Therefore, if the machine is not used for a long time, please unplug it and drain the water in the water tank.

# Safety Precautions

## Low-Temperature Burns and Precautions

- When discussing burns, people often think of injuries caused by high temperatures (e.g., boiling water or hot oil). However, prolonged contact with skin at lower temperatures (40–60°C) may also cause **low-temperature burns**, depending on individual circumstances or sensitivity.
- Unlike typical burns that only affect the skin's surface, low-temperature burns penetrate deeper layers of the skin, causing **red spots or blisters**.
- Please adjust to a lower temperature and exercise caution when using this product with the following individuals:
  - **Children or elderly persons** who may be unable to regulate temperature themselves.
  - **Individuals with limited mobility**, such as those with severe illness or disabilities.
  - **Persons likely to fall asleep**, including those under the influence of sleeping aids (e.g., sedatives or cold medicine), alcohol, or extreme fatigue.
  - If symptoms such as red spots or blisters appear, seek immediate medical attention from a healthcare professional.

## Usage Notes

- Expected Behaviors During Operation:
  - During cleaning, water may flow from the side of the nozzle. This is due to the design and is not a malfunction.
- Water Pressure Considerations:
  - If the water pressure falls below 1.3 kgf/cm<sup>2</sup> (127.5 kPa), even setting the washing intensity to the maximum may result in insufficient water flow. This issue may also occur temporarily when other water sources are in use, such as a toilet tank flushing or another faucet running.
- Before Powering On:
  - Ensure that the power supply matches the product specifications.
  - This product requires 1300W of power and should be used with a dedicated 110V/15A outlet. The power cord must be a single-core wire of at least 2.0 mm in diameter.
- Unexpected Power Outages During Use:
  - If the product's power shuts off unexpectedly, it may indicate that the internal leakage protection mechanism has been activated. Stop using the product immediately, unplug the power cord, and then reconnect it to restore normal operation.
- For Extended Non-Use Periods:
  - Unplug the power cord and drain the water tank. Stagnant water may degrade over time, potentially causing skin irritation or other symptoms upon reuse. Refer to the instruction manual for the proper water tank cleaning procedure.
- Effectiveness of Deodorizing and Sterilization Functions:
  - The performance and lifespan of the activated carbon deodorizing and electrolytic sterilization features may vary depending on environmental conditions.
- Preparing Warm Water:
  - During warm water preparation, water may flow near the nozzle for a few seconds.

# Inspection and Maintenance IPX5

Issue	Cause	Solution
Low water flow / Water supply interrupted / Nozzle not operating properly	<ol style="list-style-type: none"> <li>Foreign objects attached to the nozzle extension rod.</li> <li>Filter assembly is clogged.</li> </ol>	<ol style="list-style-type: none"> <li>Clean the nozzle extension rod.</li> <li>Clean the filter assembly.</li> </ol>
Wash function does not activate when the button is pressed.	Seat sensor is not detecting a user properly.	Ensure proper seating position over the seat sensor.
Washing stops automatically during operation.	<ol style="list-style-type: none"> <li>Washing has exceeded five minutes.</li> <li>Power indicator light is off.</li> </ol>	<ol style="list-style-type: none"> <li>Press the wash button again.</li> <li>If the leakage detection mechanism is activated, reconnect the power supply.</li> </ol>
Seat temperature is too low.	Heating time is insufficient.	Maintain the seat temperature setting regularly.
Warm water temperature is too low.	Water temperature is set too low.	Increase the water temperature setting.
Warm air function is abnormal.	<ol style="list-style-type: none"> <li>Warm air temperature is too high or too low.</li> <li>Warm air stops mid-operation.</li> <li>Warm air does not operate.</li> <li>Abnormal low temperature detected.</li> </ol>	<ol style="list-style-type: none"> <li>Adjust using the warm air button.</li> <li>Press the warm air button again.</li> <li>Ensure proper seating position over the seat sensor.</li> <li>For ambient temperatures above 35°C, use medium or high warm air settings.</li> </ol>
Spray nozzle cannot retract.	<ol style="list-style-type: none"> <li>Power is disconnected.</li> <li>Nozzle is obstructed by foreign objects.</li> </ol>	Reconnect the power supply.
Spray nozzle does not extend.	<ol style="list-style-type: none"> <li>Power is disconnected.</li> <li>Seat sensor is not detecting a user.</li> </ol>	Ensure proper seating position over the seat sensor.

**If the above troubleshooting steps do not resolve the issue, please contact your distributor or service personnel.**

- Do not attempt to disassemble, repair, or modify the product yourself. Such actions may result in fire, injury, or electric shock due to improper handling.
- **Maintenance Recommendation:** Have the product inspected by a service professional every three years to ensure optimal performance.

## Usage Precautions

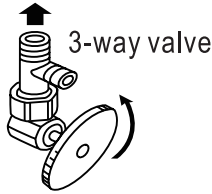
- Keep flammable materials, such as cigarettes, away from the product. This may cause a fire hazard.
- Do not lift the product by the toilet seat or cover. The unit may detach and fall, potentially causing injury. (Children should not play with the product.)
- Avoid using abrasive materials, strong acids, or alkaline cleaning agents. These may damage the product or cause malfunctions.
- Do not expose the product to direct sunlight. This can cause discoloration or uneven heating of the seat.
- Do not remove the water filter without closing the water shutoff valve. Doing so may result in water spray

# Correct Usage Instructions

## Before Operation

- ① **Ensure the water supply valve is open:** If the valve is closed, turn it counterclockwise to open.

Toilet Tank



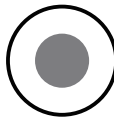
Counterclockwise water pipe stopcock

- ② **Plug in the power cord** to an outlet with the specified voltage. The night light indicator will illuminate.



## Seating

### Heated Seat



Sit properly at the **seat sensor** position.



### Seat Temperature Adjustment



Press the **Seat Temp** button to select the desired temperature (4 levels).



### Water Temperature Adjustment



Press the **Water Temp** button to select the desired temperature (4 levels).

### Night Light Adjustment



Press the **Night Light** button to adjust the blue light brightness (3 levels).

Note: The night light cannot be turned off.

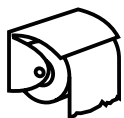
## Stop

### Cleaning Dryer Turn Off



Press to launch the settings.

Wipe Water Droplets



## Washing Functions



### Rectal Wash

1. Press the **Rear Wash** button.
2. Press again to adjust the washing position.



### Female Wash

1. Press the **female Wash** button.
2. Press again to adjust the washing position.



### Massage Wash

1. Press the **Message** button to activate.
2. Press again to adjust massage position and water volume.
3. Press again to return to normal wash.
4. Massage mode settings can be saved.



### Water Flow Intensity

1. Press the **Water Flow Adjustment** button to adjust the water pressure.
2. If water flow is weak, set it to a stronger level.

Ⓞ **Note:**

The water temperature may take time to reach the desired level, as the water is heated to the appropriate temperature.

# Correct Usage Instructions

## Warm Air Drying and Deodorization

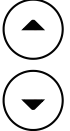


### Warm Air Drying

1. Press the **Warm Air** button to start. The drying process will automatically stop after 6 minutes. To continue, press the button again.
2. To stop drying, press the **Stop** button.
3. The drying function automatically stops when the user leaves the seat.



### Fan Temperature and Speed Adjustment



1. Press the Fan Temp button to adjust temperature (4 levels).
2. Press the Up/Down button to adjust fan speed.



### Filter For Deodorizer

1. When seated, the deodorization function operates for up to 3 minutes. Upon leaving the seat, it continues to run for 1 minute.
2. To continue deodorization, press the **Deodorization** button; it will stop after 3 minutes.

## Automatic Wash Function



### One-Touch Wash

1. Hold the **AUTO1 (or AUTO2)** button for 5 seconds to enter the adjustment menu.
2. Use the **Front Wash** or **Rear Wash** buttons to:
  - Adjust position (5 levels).
  - Adjust massage (5 levels).
  - Adjust washing time (6 levels).
  - Adjust water volume.
3. Use the **Water Temp** button to adjust water temperature.
4. Use the **Warm Air** button to adjust fan temperature (3 levels) and fan speed (5 levels).
5. Adjust drying time (6 levels).
6. To save settings, press the **Stop** button or wait 30 seconds without pressing any buttons to return to standby mode.

## Remote Control Display

